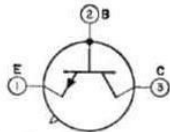


TRANSISTOR



Germanium n-p-n type used in medium-speed switching applications in data-processing equipment. JEDEC No. TO-5 package; outline 6, Outlines Section. This type is identical with type 2N1302 except

2N1304

for the following:

CHARACTERISTICS

Base-to-Emitter Voltage (with collector ma = 10 and base ma = 0.5)
 Collector-to-Emitter Saturation Voltage (with collector ma = 10 and base ma = 0.25)

0.15 to 0.35 volt
 0.2 max volt

In Common-Base Circuit

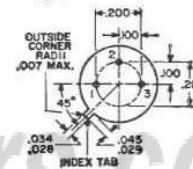
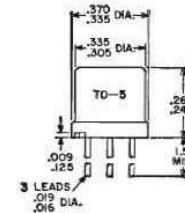
Forward-Current-Transfer-Ratio Cutoff Frequency (with collector-to-base volts = 5 and emitter ma = 1)

5 min Mc

In Common-Emitter Circuit

Forward Current-Transfer Ratio:
 With collector-to-emitter volts = 1 and collector ma = 10 ..
 With collector-to-emitter volts = 0.35 and collector ma = 200 ..

40 to 200
 15 min



<http://alltransistors.com>